

Financial Report

October 2022

Statement of Income – October (in thousands)

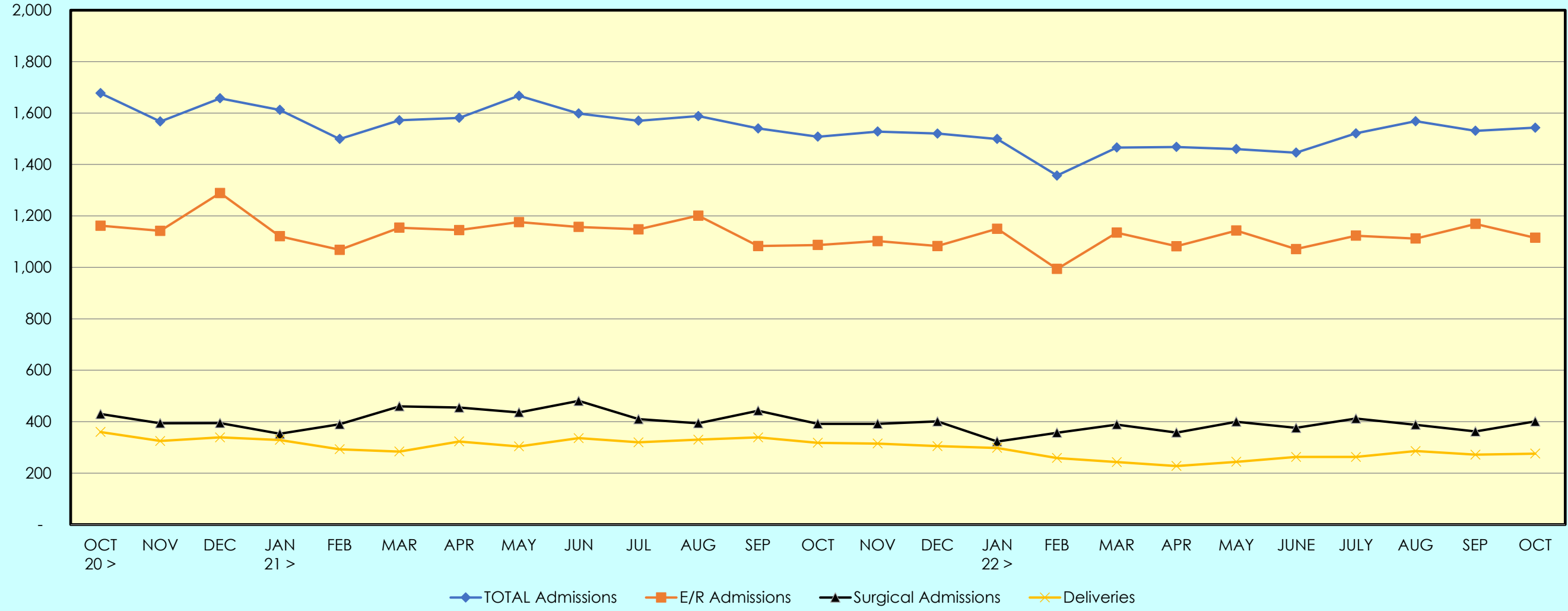
October 2022	Actual	Budget	Last Year	Last Year Variance	Last Year Variance %
Revenues					
Gross Inpatient Revenue	\$ 121,414	\$ 127,353	\$ 112,789	\$ 8,625	7.6%
Gross Outpatient Revenue	51,845	58,138	45,844	6,001	13.1%
Total Gross Patient Revenue	173,259	185,491	158,633	14,625	9.2%
Deductions from Revenue	(136,075)	(147,279)	(123,257)	(12,818)	10.4%
Net Patient Revenue	37,183	38,212	35,376	1,808	5.1%
Supplemental Funds/Settlements	2,857	3,118	2,101	756	36.0%
Other Operating Revenue	1,052	1,258	978	73	7.5%
Total Operating Revenues	\$ 41,092	\$ 42,588	\$ 38,455	\$ 2,637	6.9%
Expenses					
Productive Salaries	\$ 15,020	\$ 15,424	\$ 14,649	\$ 371	2.5%
Non-Productive Salaries	2,751	2,704	2,540	211	8.3%
Registry/Contract Labor	2,930	1,155	540	2,390	442.3%
Benefits	7,179	5,455	4,863	2,316	47.6%
Total Supplies	6,015	6,757	5,893	122	2.1%
Purchased Svcs	3,318	3,053	3,000	318	10.6%
Other	5,997	5,526	5,256	741	14.1%
Total Operating Expenses	\$ 43,210	\$ 40,073	\$ 36,742	\$ 6,469	17.6%
EBIDA	\$ (2,119)	\$ 2,514	\$ 1,713	\$ (3,832)	(223.7%)
<i>EBIDA Margin</i>	-5.2%	5.9%	4.5%		
Depreciation and Amortization	1,794	1,687	1,598	196	12.2%
Interest Expense	510	521	495	15	3.0%
Operating Income (loss)	\$ (4,422)	\$ 306	\$ (380)	\$ (4,043)	(1,064.3%)
Investment Income (loss)	(173)	42	(563)	390	(69.2%)
Capital Contribution	-	-	-	-	0.0%
NET INCOME (LOSS)	\$ (4,595)	\$ 348	\$ (942)	\$ (3,653)	(387.6%)
<i>Income from Operations Margin %</i>	-10.8%	0.7%	-1.0%		
<i>Operating EBIDA %</i>	-5.2%	5.9%	4.5%		
<i>Excess Margin %</i>	-11.2%	0.8%	-2.5%		

Statement of Income –Year to Date (in thousands)

October 2022 YTD	Actual	Budget	Last Year	Last Year Variance	Last Year Variance %
Revenues					
Gross Inpatient Revenue	\$ 469,192	\$ 505,319	\$ 458,796	\$ 10,396	2.3%
Gross Outpatient Revenue	212,262	230,720	209,369	2,893	1.4%
Total Gross Patient Revenue	681,454	736,039	668,164	13,290	2.0%
Deductions from Revenue	(538,235)	(586,017)	(519,205)	(19,030)	3.7%
Net Patient Revenue	143,219	150,022	148,960	(5,741)	(3.9%)
Supplemental Funds/Settlements	11,645	12,473	8,116	3,529	43.5%
Other Operating Revenue	4,779	5,030	4,196	582	13.9%
Total Operating Revenues	\$ 159,643	\$ 167,525	\$ 161,272	\$ (1,629)	(1.0%)
Expenses					
Productive Salaries	\$ 58,613	\$ 61,198	\$ 59,147	\$ (533)	(0.9%)
Non-Productive Salaries	11,651	10,733	10,484	1,167	11.1%
Registry/Contract Labor	10,268	4,580	3,813	6,455	169.3%
Benefits	21,438	21,552	19,214	2,224	11.6%
Total Supplies	24,382	26,798	24,915	(533)	(2.1%)
Purchased Svcs	11,872	11,868	11,526	346	3.0%
Other	21,538	20,623	20,149	1,390	6.9%
Total Operating Expenses	\$ 159,763	\$ 157,353	\$ 149,247	\$ 10,516	7.0%
EBIDA	\$ (119)	\$ 10,172	\$ 12,025	\$ (12,144)	(101.0%)
<i>EBIDA Margin</i>	<i>-0.1%</i>	<i>6.1%</i>	<i>7.5%</i>		
Depreciation and Amortization	7,159	6,780	6,426	732	11.4%
Interest Expense	2,046	2,084	1,992	54	2.7%
Operating Income (loss)	\$ (9,324)	\$ 1,308	\$ 3,606	\$ (12,931)	(358.5%)
Investment Income (loss)	(2,014)	169	(314)	(1,700)	541.4%
Capital Contribution	-	-	-	-	0.0%
NET INCOME (LOSS)	\$ (11,338)	\$ 1,477	\$ 3,292	\$ (14,631)	(444.4%)
<i>Income from Operations Margin %</i>	<i>-5.8%</i>	<i>0.8%</i>	<i>2.2%</i>		
<i>Operating EBIDA %</i>	<i>-0.1%</i>	<i>6.1%</i>	<i>7.5%</i>		
<i>Excess Margin %</i>	<i>-7.1%</i>	<i>0.9%</i>	<i>2.0%</i>		

Admission Trends

Admission Trends
October 2020 - October 2022



Volumes – October

October 2022	Actual	Budget	Last Year	Last Year Variance	Last Year Variance %
<u>Volumes</u>					
I/P Surgeries Main	288	334	281	7	2.5%
I/P Surgeries WIP	113	106	111	2	1.8%
O/P Surgeries Main	280	333	268	12	4.5%
Total Surgeries	681	773	660	21	3.2%
IP GI Procedures	180	168	193	(13)	(6.7%)
OP GI Procedures	205	223	184	21	11.4%
Total GI Procedures	385	391	377	8	2.1%
IP CC/IR/EP Procedures	103	81	85	18	21.2%
OP CC/IR/EP Procedures	67	81	74	(7)	(9.5%)
Total CC/IR/EP Procedures	170	162	159	11	6.9%
Trauma Cases	128	144	136	(8)	(5.9%)
E/R Visits	10,295	10,834	9,263	1,032	11.1%
E/R Admits	1,115	1,192	1,087	28	2.6%
E/R Conversion to I/P %	10.8%	11.0%	11.7%	-0.9%	
E/R Admits to Total Admits %	72.3%	75.9%	72.1%	0.2%	
Deliveries	276	301	318	(42)	(13.2%)

Volumes – October (continued)

October 2022	Actual	Budget	Last Year	Last Year Variance	Last Year Variance %
<u>Volumes</u>					
Acute Discharges	1,543	1,571	1,508	35	2.3%
Adjusted Discharges	2,202	2,271	2,121	81	3.8%
Acute Patient Days	7,563	7,498	7,351	212	2.9%
Adjusted Patient Days	10,792	10,792	10,339	453	4.4%
Observations (as Patient Days)	44	121	85	(41)	(48.2%)
Average Daily Census	244	242	237	7	3.0%
Adjusted Occupied Bed	348	348	334	15	4.4%
General Acute LOS	4.90	4.77	4.87	0.03	0.6%
General Acute CMI	1.48	1.61	1.58	(0.10)	(6.3%)
Medicare Acute LOS	5.85	5.66	5.94	(0.08)	(1.4%)
AVH GM LOS	3.71	3.95	3.86	(0.15)	(3.9%)
CMS GM LOS	3.88	4.46	4.37	(0.49)	(11.2%)
Medicare CMI	2.12	2.23	1.98	0.14	7.1%

Volumes – Year to Date

October 2022 YTD	Actual	Budget	Last Year	Last Year Variance	Last Year Variance %
<u>Volumes</u>					
I/P Surgeries Main	1,176	1,325	1,193	(17)	(1.4%)
I/P Surgeries WIP	387	421	446	(59)	(13.2%)
O/P Surgeries Main	1,130	1,320	1,213	(83)	(6.8%)
Total Surgeries	2,693	3,066	2,852	(159)	(5.6%)
IP GI Procedures	685	667	687	(2)	(0.3%)
OP GI Procedures	778	884	848	(70)	(8.3%)
Total GI Procedures	1,463	1,551	1,535	(72)	(4.7%)
IP CC/IR/EP Procedures	366	322	318	48	15.1%
OP CC/IR/EP Procedures	237	322	323	(86)	(26.6%)
Total CC/IR/EP Procedures	603	644	641	(38)	(5.9%)
Trauma Cases	521	571	562	(41)	(7.3%)
E/R Visits	41,839	42,986	39,501	2,338	5.9%
E/R Admits	4,519	4,729	4,519	0	0.0%
E/R Conversion to I/P %	10.8%	11.0%	11.4%	-0.6%	
E/R Admits to Total Admits %	73.3%	75.9%	72.8%	0.5%	
Deliveries	1,097	1,194	1,307	(210)	(16.1%)

Volumes – Year to Date (continued)

October 2022 YTD	Actual	Budget	Last Year	Last Year Variance	Last Year Variance %
<u>Volumes</u>					
Acute Discharges	6,163	6,234	6,206	(43)	(0.7%)
Adjusted Discharges	8,956	9,011	9,041	(85)	(0.9%)
Acute Patient Days	28,680	29,751	29,576	(896)	(3.0%)
Adjusted Patient Days	41,647	42,820	43,070	(1,423)	(3.3%)
Observations (as Patient Days)	202	480	804	(602)	(74.9%)
Average Daily Census	233	242	240	(7)	(2.9%)
Adjusted Occupied Bed	339	348	350	(12)	(3.3%)
General Acute LOS	4.65	4.77	4.77	(0.11)	(2.4%)
General Acute CMI	1.54	1.61	1.55	(0.01)	(0.6%)
Medicare Acute LOS	5.63	5.66	5.89	(0.26)	(4.5%)
AVH GM LOS	3.82	3.95	4.13	(0.31)	(7.5%)
CMS GM LOS	4.24	4.46	4.47	(0.23)	(5.3%)
Medicare CMI	2.26	2.23	2.22	0.04	1.8%

Ratios & Debt Covenant Requirements

	Actual	Requirement	Last Year	Last Year Variance
<u>Bond Covenant Requirements</u>				
Days Cash on Hand	128.5	55.0	172.7	(44.2)
Debt Service Coverage	1.72	1.20	3.49	(1.77)

AVOIC



	October 2022			Calendar YTD October 2022		
	Actual	Budget	Budget Variance	Actual	Budget	Budget Variance
<u>Net Patient Revenues</u>	\$ 1,109,871	\$ 1,686,531	\$ (576,660)	\$ 14,480,987	\$ 16,425,279	\$ (1,944,292)
<u>Net Income (Loss)</u>	\$ (582,930)	\$ 105,089	\$ (688,019)	\$ (1,610,304)	\$ 373,894	\$ (1,984,198)

Thank You

Antelope Valley Medical Center
1600 West Avenue J,
Lancaster, CA 93534
www.avmc.org



Antelope Valley
Medical Center